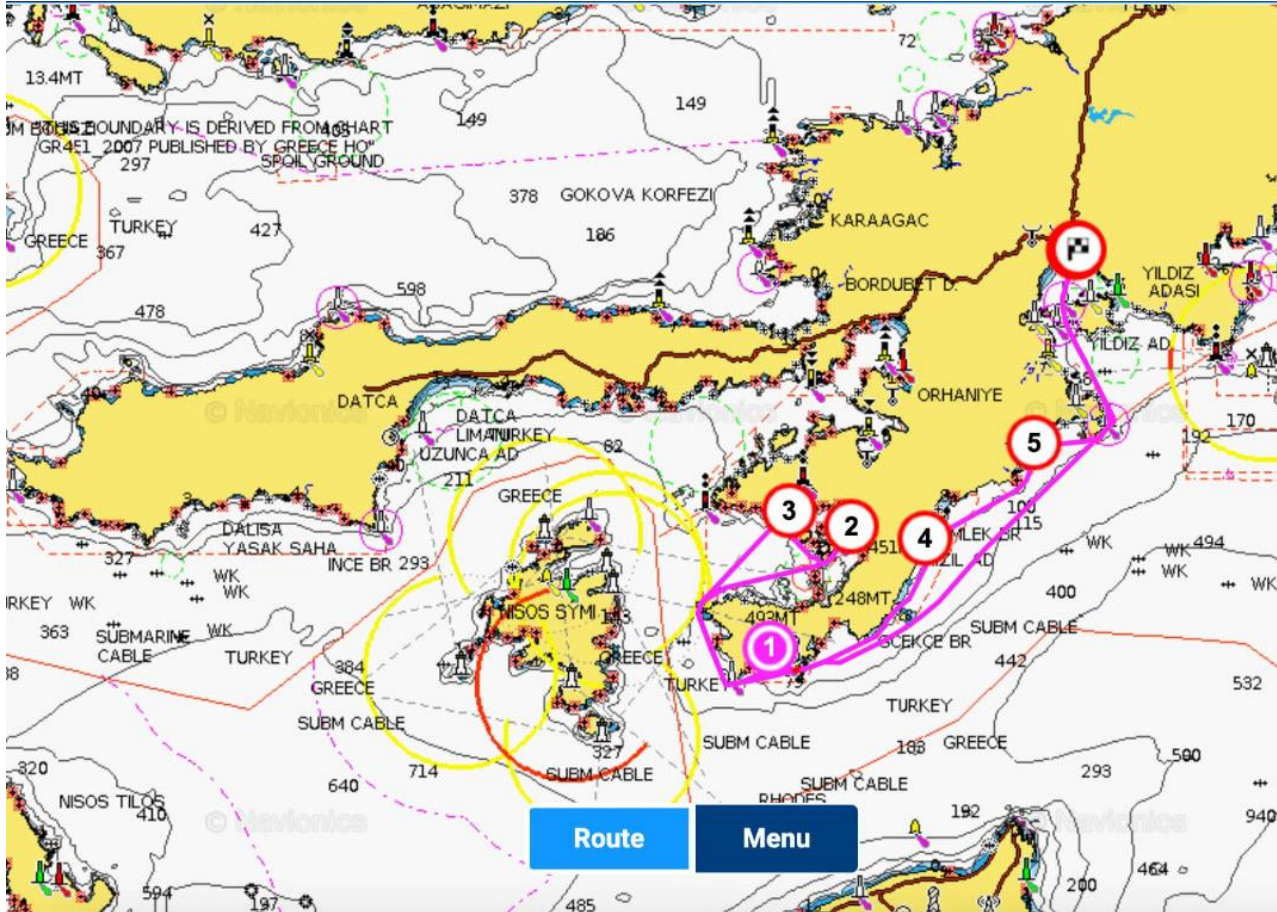


# 1 Week

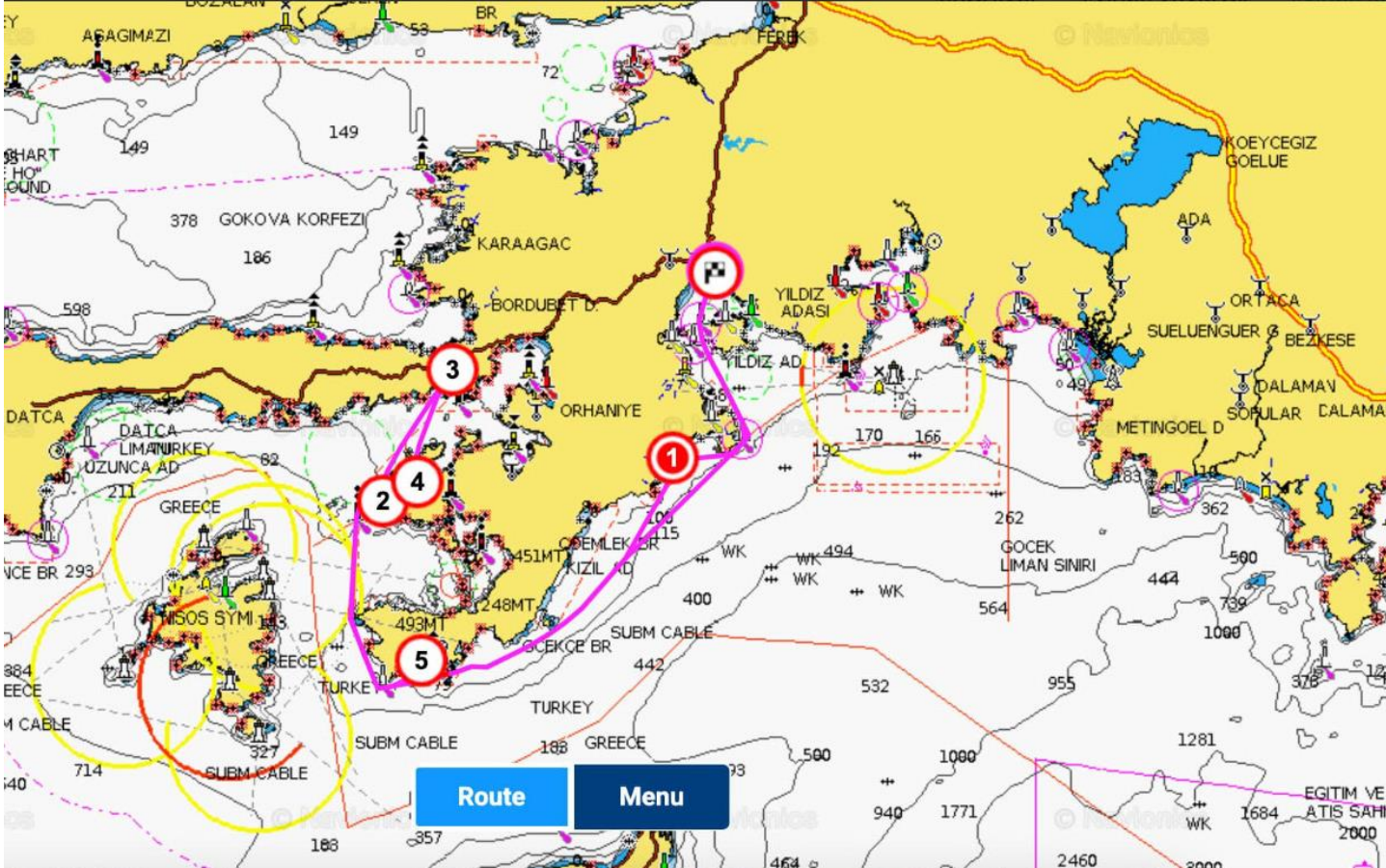
**Marmaris – Hisarönü – Söğüt - Total Distance : 84.2 NM**



- 1. Day Bozukkale 26.5 NM
- 2. Day Söğüt 14.2 NM
- 3. Day Bozburun Adaboğazı 5.1 NM
- 4. Day Arapadası 20.4N M
- 5. Day Çiftlik 6.7NM
- 6. Day Marmaris 11.3NM

# 1 Week

**Marmaris – Hisarönü - Total Distance : 91.5 NM**



1. Day

Çiftlik 11.3NM

2. Day

Dirsekbükü 27.6NM

3. Day

Bencik 6.6NM

4. Day

Kocabahçe 5.2NM

5. Day

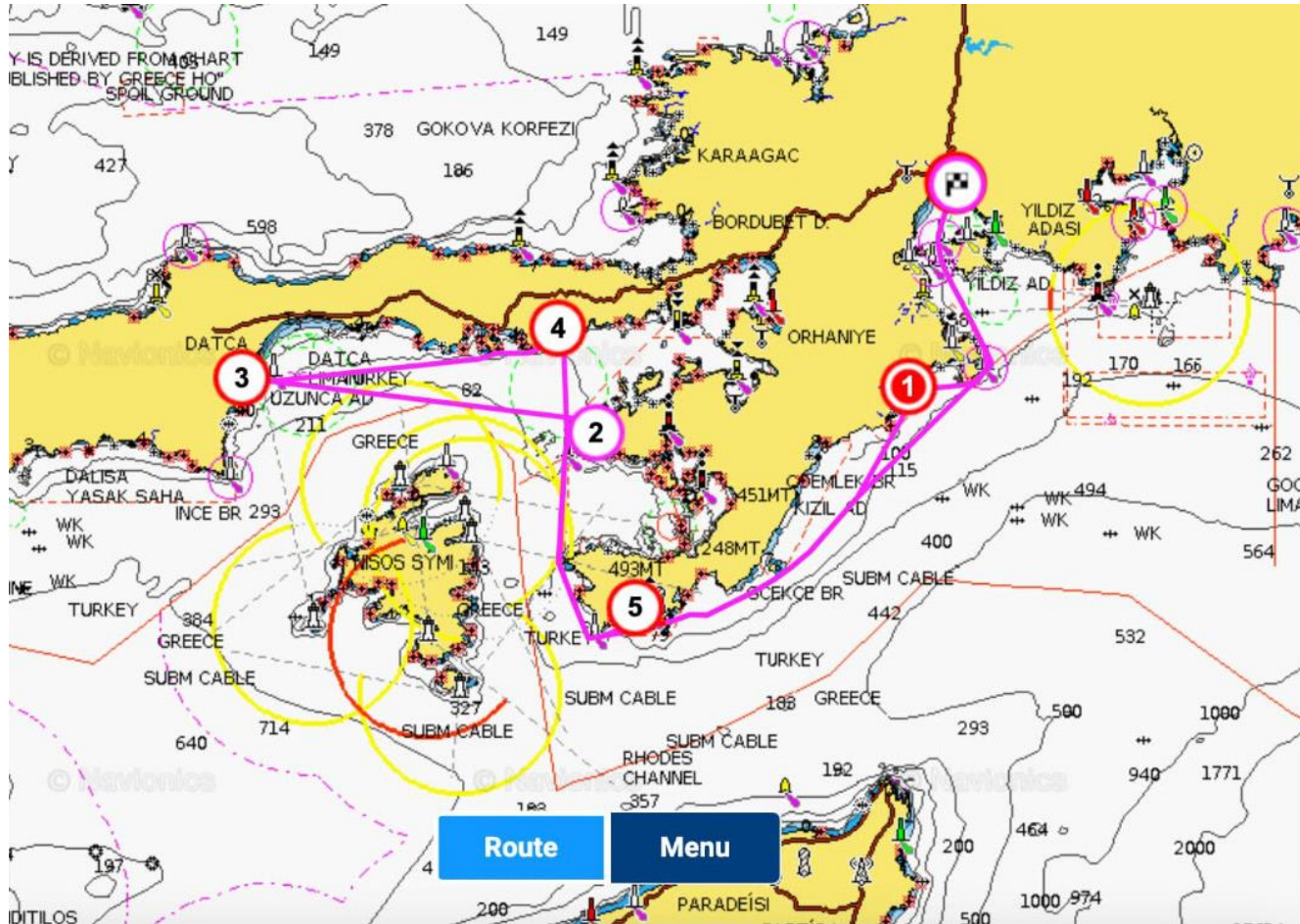
Bozukkale 14.4NM

6. Day

Marmaris 26.3NM

# 1 Week

## Marmaris – Datça - 108.9 NM



1. Day

Çiftlik 11.3NM

2. Day

Dirsekbükü 27.6NM

3. Day

Datça 14.8NM

4. Day

Gönlücebükü 13.3NM

5. Day

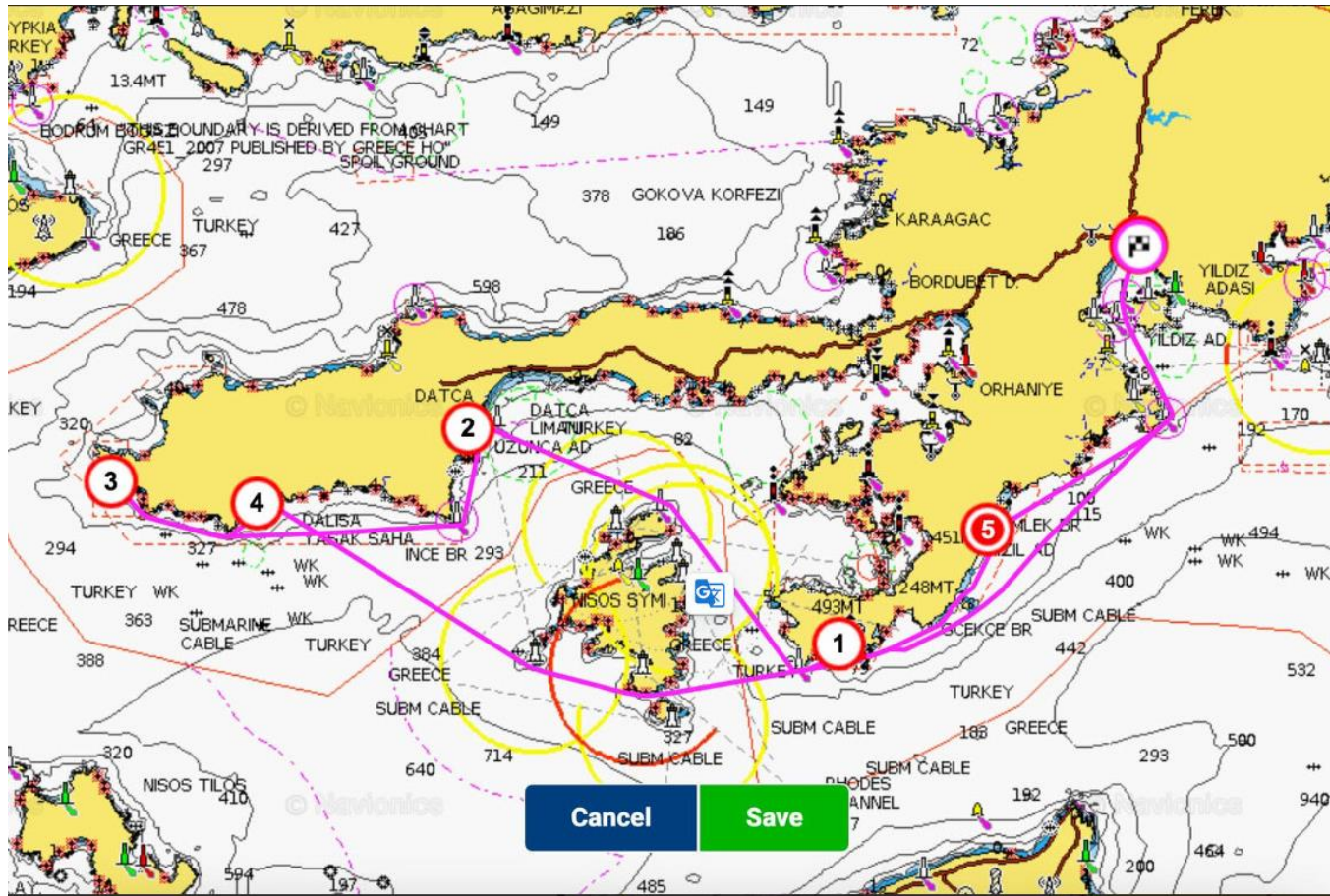
Bozukkale 15.6NM

6. Day

Marmaris 26.3NM

# 1 Week

## Marmaris – Knidos - 129.3 NM



1. Day

Bozukkale 26.5NM

2. Day

Datça 20.9NM

3. Day

Knidos 20.2NM

4. Day

Palamutbükü 8NM

5. Day

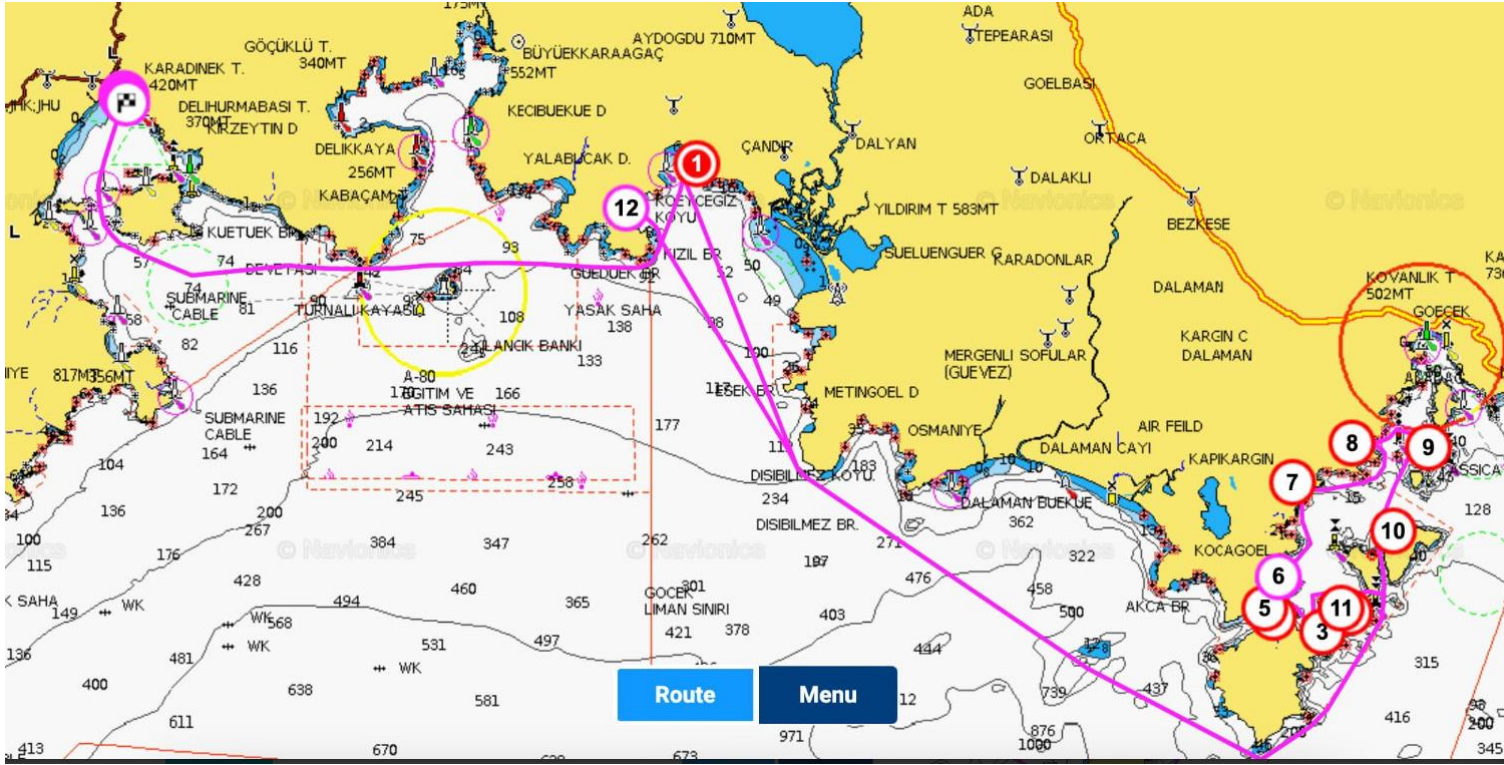
Arapadası 36.5NM

6. Day

Marmaris 17.2NM

# 2 Week

## Marmaris – Göcek – 114.7 NM



- |         |                        |
|---------|------------------------|
| 1. Day  | Ekincik 19.8 NM        |
| 2. Day  | Göbün 27.7 NM          |
| 3. Day  | Yavansu 2.2 NM         |
| 4. Day  | Hamam 1.7 NM           |
| 5. Day  | Kapıkoyu 0.5 NM        |
| 6. Day  | Küçük Sarsala 1.8 NM   |
| 7. Day  | Bedri Rahmi 2.8 NM     |
| 8. Day  | Boynuzbükü 3.6 NM      |
| 9. Day  | Yassıca Adaları 2.2 NM |
| 10. Day | Tersane Adası 3.0 NM   |
| 11. Day | Merdivenlikoy 3.3 NM   |
| 12. Day | Küçüksemizce 27.5 NM   |
| 13. Day | Marmaris 18.6 NM       |

## 2 Week

### Marmaris – Kaş – Kekova - 243.1 NM (Page 1)



- |         |                      |
|---------|----------------------|
| 1. Day  | Ekincik 19.8NM       |
| 2. Day  | Göbün 27.7NM         |
| 3. Day  | Gemiler Adası 13.4NM |
| 4. Day  | Kaş 39.9NM           |
| 5. Day  | Kale – Üçağız 18.9NM |
| 6. Day  | Gökkaya 3.6NM        |
| 7. Day  | Karaloz 3.2NM        |
| 8. Day  | Bayındır 17NM        |
| 9. Day  | Kalkan 15.1NM        |
| 10. Day | Karacaören 28.3NM    |
| 11. Day | Dış Göbün 11.8NM     |
| 12. Day | Küçüksemizce 25.8NM  |
| 13. Day | Marmaris 18.6NM      |

## 2 Week

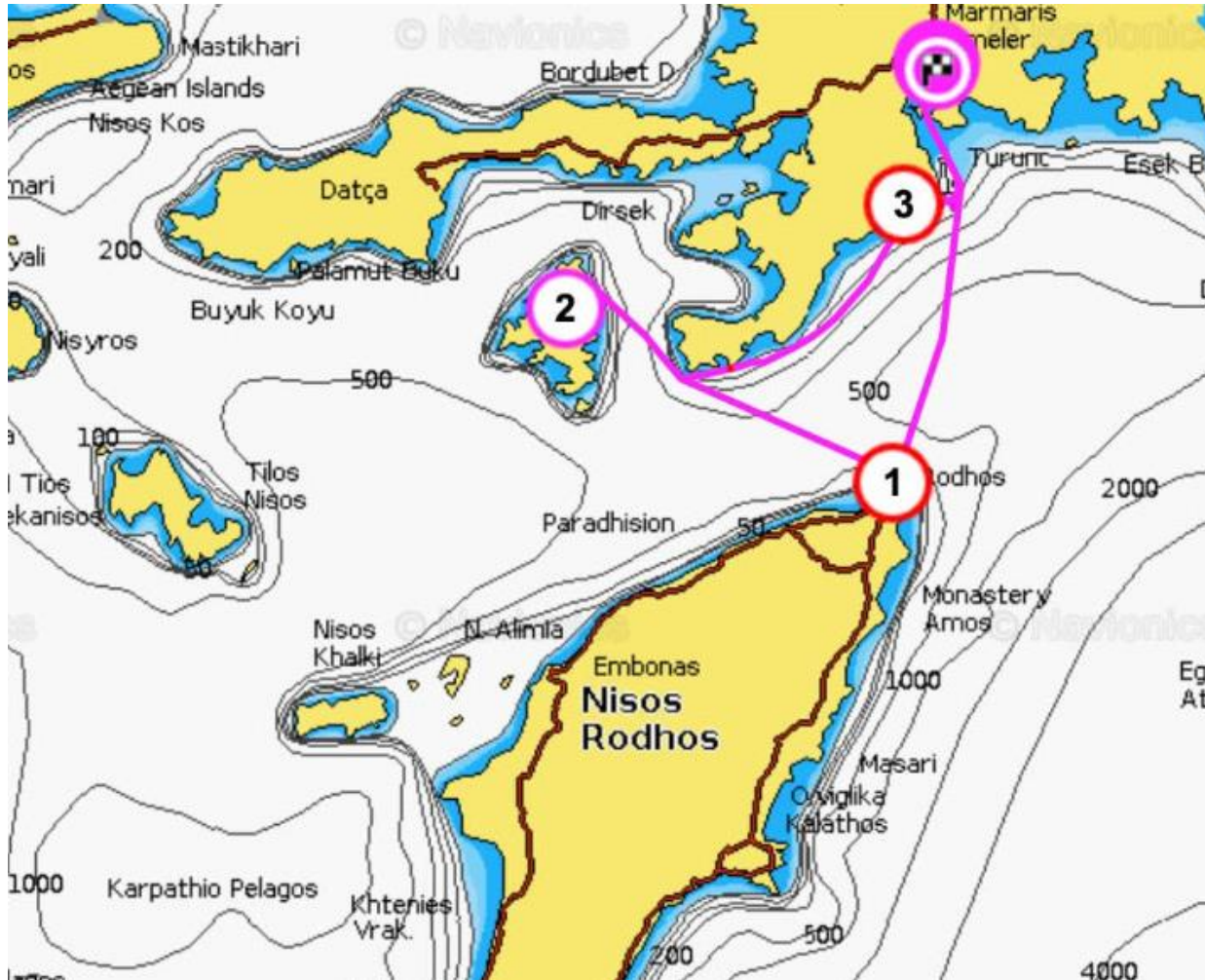
### Marmaris – Kaş – Kekova - 243.1 NM (Page 2)



- |         |                      |
|---------|----------------------|
| 1. Day  | Ekincik 19.8NM       |
| 2. Day  | Göbün 27.7NM         |
| 3. Day  | Gemiler Adası 13.4NM |
| 4. Day  | Kaş 39.9NM           |
| 5. Day  | Kale – Üçağız 18.9NM |
| 6. Day  | Gökkaya 3.6NM        |
| 7. Day  | Karaloz 3.2NM        |
| 8. Day  | Bayındır 17NM        |
| 9. Day  | Kalkan 15.1NM        |
| 10. Day | Karacaören 28.3NM    |
| 11. Day | Dış Göbün 11.8NM     |
| 12. Day | Küçüksemizce 25.8NM  |
| 13. Day | Marmaris 18.6NM      |

# 1 Week

## Marmaris – Rhodes – Symi - 86.9 NM

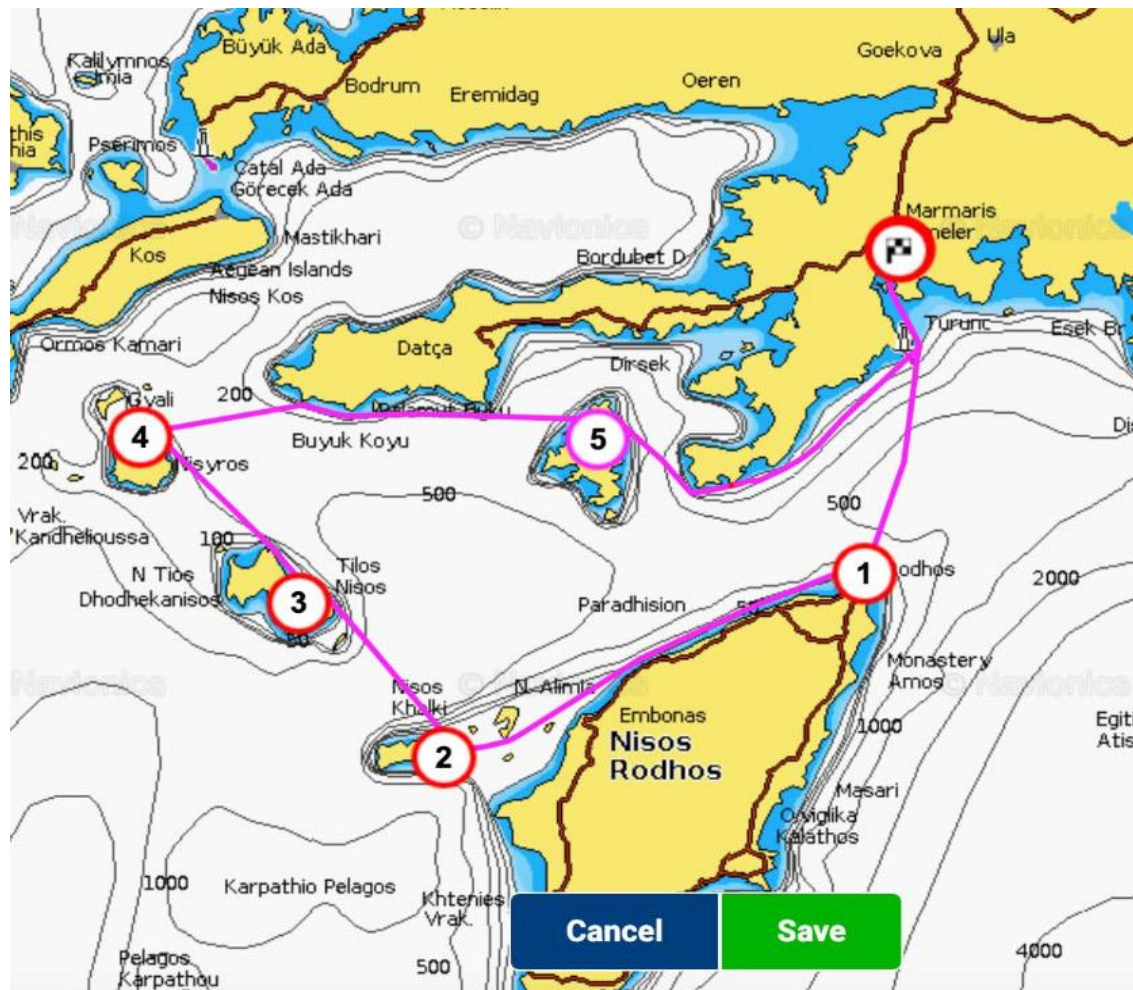


- |        |                  |
|--------|------------------|
| 1. Day | Rhodes 25.3 NM   |
| 2. Day | Rhodes           |
| 3. Day | Symi 23.4 NM     |
| 4. Day | Symi             |
| 5. Day | Çiftlik 26.9 NM  |
| 6. Day | Marmaris 11.3 NM |



# 1 Week

## Marmaris – South Greek Islands – 167.7 NM



- 1. Day Rhodes 25.3 NM
- 2. Day Halki 34.2 NM
- 3. Day Tilos 18.4 NM
- 4. Day Nisyros 18.3 NM
- 5. Day Symi 34.4 NM
- 6. Day Marmaris 37.1 NM