



SAILERA
YACHT CHARTER

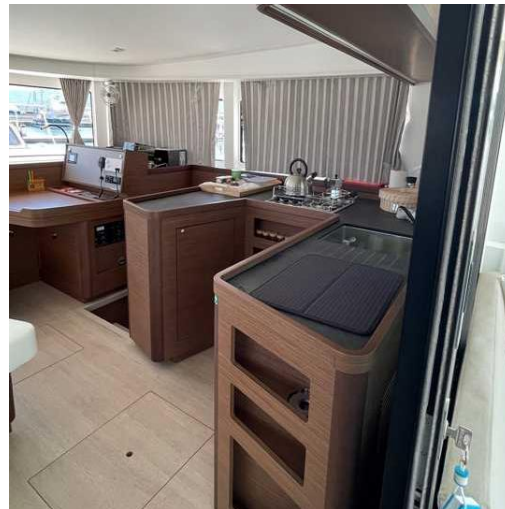


LOA 12,8 m - Beam 7,7 m - Draft 1,25 m
Cabins 4+2, Berths 8+2, Heads 4
Water Tank 600 Lt - Fuel 600 Lt
Engine 2x57 HP Yanmar

LIQUID ASSET (Lagoon 42) 2021

Classic Main Sail , Self Tacking Jib
Electrical Winch at helmstation
Dinghy with oars & pump, 3 m
Domestic Bateriaes, 4 x 140 Ah
Electrical Windlass, 1000 W
20 Kg Delta Anchor & 100 m of Chain
8 + 2 Fenders
Speed,depth, wind inst. Autopilot GPS – Plotter, V.H.F. with
AIS receiver
Bimini at helm station
PVC curtains at helm station
Cockpit Cushions
Foredeck Sunbathe Mattress
Battery Charger
Inverter (12V to 220V)
220 V Shore Power Cable & adaptors
Solar Panels
USB outlets in cabins
Water Heater
Fan in Saloon & Cabins
3 burner LPG Stove & Oven
230 Lt. Refrigerator - Freezer
Electric Toilets
Radio-MP3 Player
Cockpit Speakers





STANDARD EQUIPMENT

Engine

2 x 57 Hp Yanmar
Sail drive
3 Blades fixed aluminum propeller
Engine spares
Engine spare oil
20 L. diesel jerrycan (Empty)

Sail & Rig

Full batten with 3 reef main sail
Lazy bag
Self tacking jib
Harken 46 self tailing winch on coach roof
Harken 46 self tailing 2 speed electrical winch on coach roof
Harken 35 self tailing winch
2 x Winch handles
Spinnaker halyard

Electronics & Navigation

Raymarine 12" Chartplotter at the helm station
Raymarine speed, depth and wind instruments at the helm station
Raymarine VHF at the chart table
Raymarine AIS transceiver
Raymarine autopilot
Binoculars
Hand bearing compass
Paper navigation charts
Cruising guide book
Magnetic compass
Navigational tools
Black sphere & cone

Electric

4 x 140 A service batteries
2 x 95 A engine batteries
Battery charger
Inverter
220 V shore power cable & adaptors
Solar panels
Decklight

Comfort & Entertainment

3.00 m rigid bootm inflatable dinghy with oars & pump
Fixed rigid bimini at helm station
Bimini front, back and side covers
Cockpit cushions
Foredeck sunbath mattress
Flybridge sunbathing area with mattress
Forward deck area tent
Seating at stb/port pullpits
Fusion radio-MP3 player with bluetooth
Speakers in saloon
Speakers in cockpit
USB outlets in saloon & cabins
Fan in saloon & cabins
230 Lt. refrigerator & freezer
3 burner LPG stove & oven
2 x LPG bottles
Complete galley equipment
Gangway
Deck shower
Swimming ladder
Water heater
4 x Electric toilets
4 x Waste tanks

STANDARD EQUIPMENT

Mooring & Anchoring

Winch handle for windlass
Electrical windlass, 1000 W
20 Kg Delta anchor & 100 m of chain
Windlass RC & chain counter at helm station
8 x Fenders
2 x Spherical fenders
4 x 17 m spring lines
2 x 50 m long line line
2 x Rat guards
Bridle
Spare anchor with 5 m chain and 50 m rope

Clothes pegs
User's manuals

Safety

Life raft for 10 people
Life jackets (10 + 2)
Safety harnesses (10)
Horseshoe life buoy and flashing light
Distress signals (4+4+2)
Wooden plugs
Fire extinguishers
Tool box
First aid kit
Barometer
Torch / hand projector
Fog horn
Bosun chair
Diver knife
Underwater lamp
Fire blanket
Wire cutter
Automatic bilge pumps in hulls & engine rooms (Stb / Port)
Manual bilge pumps (Stb / Port)
Emergency tiller

Others

Large storage lockers at foredeck
Bucket, scoope, sponge
Snorkelling set (Mask, fins, snorkel)
Boat hook, deck brush, floor squeegee

PRICES 2024

Before / After

2 Mar / 16 Nov

€ 6.350

02 Mar

27 April

€ 6.950

27 Apr

29 Jun

€ 7.950

29 Jun

03 Agu

€ 8.500

03 Agu

28 Sep

€ 8.850

28 Sep

16 Nov

€ 8.100

Security Deposit € 3,500

OBLIGATORY EXTRAS	
Standard Charter Pack (Includes Transitlog for Turkish territorial waters, final cleaning, bed linens, towels, 2 gas bottles, toilet paper, kitchen roll and cloths, sponge, dish soap, gel hand soap, welcome drink:	€ 350 /charter
OPTIONAL EXTRAS	
Comfort Pack (OB Engine, Wi-Fi)	€ 120 /week
Skipper	€ 150 /day + meals
Hostess	€ 110 /day + meals
Chef	€ 120 /day + meals
Hostess / cook	€ 150 /day + meals
Outboard engine	€ 80 /first week, € 40 following weeks
Safety Railing Net	€ 80 /charter
Genekar	€ 400 /week + deposit raise € 1000
Wi-Fi Router (50 GB)	€ 60 /week
SUP (Stand Up Paddle)	€ 110 /week + deposit raise € 200
Canoe, inflatable (2 pax)	€ 125 /week + deposit raise € 200
Yoga Isup Board	€ 80 /week + deposit raise € 200
Sea Scooter (SuBlue Mix Pro)	€ 170 / week + deposit raise € 200
Extra Towels set (2 pcs, bath&hand)	€ 5 /set
Extra Linen set (sheet, 2 pillow covers)	€ 10 /set
Coffee Machine (Capsules excluded)	€ 30 /week

Sailera Turizm Ticaret A.Ş.

Sarıana Mah. M.Münir Elgin Blv.

Setur Netsel Marina No: 54C

48700 Marmaris

Tel & Fax : +90 412 34 56

E-mail : reservations@sailera.com

www.sailera-yachtcharter.com